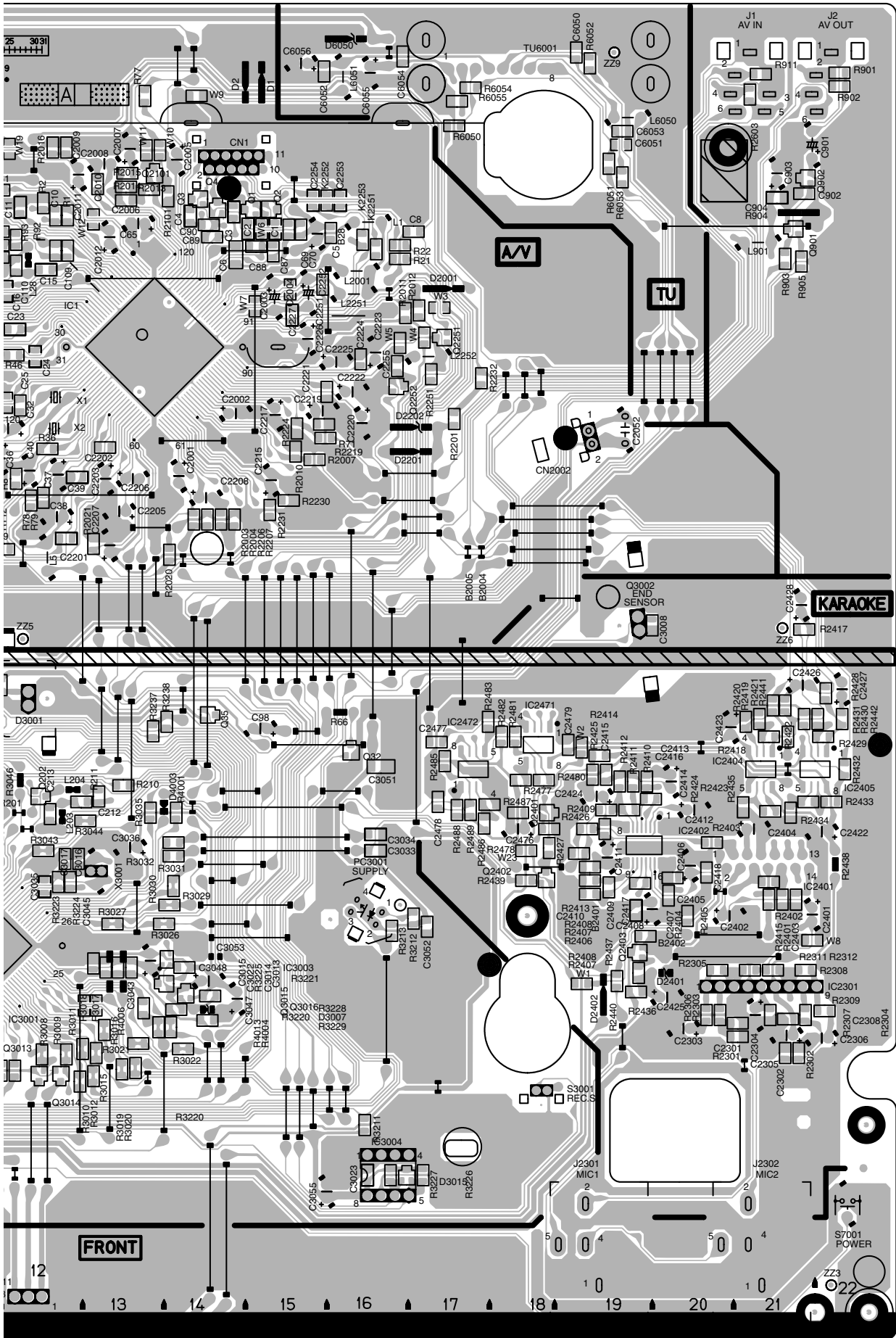


SECTION 4 CHARTS AND DIAGRAMS

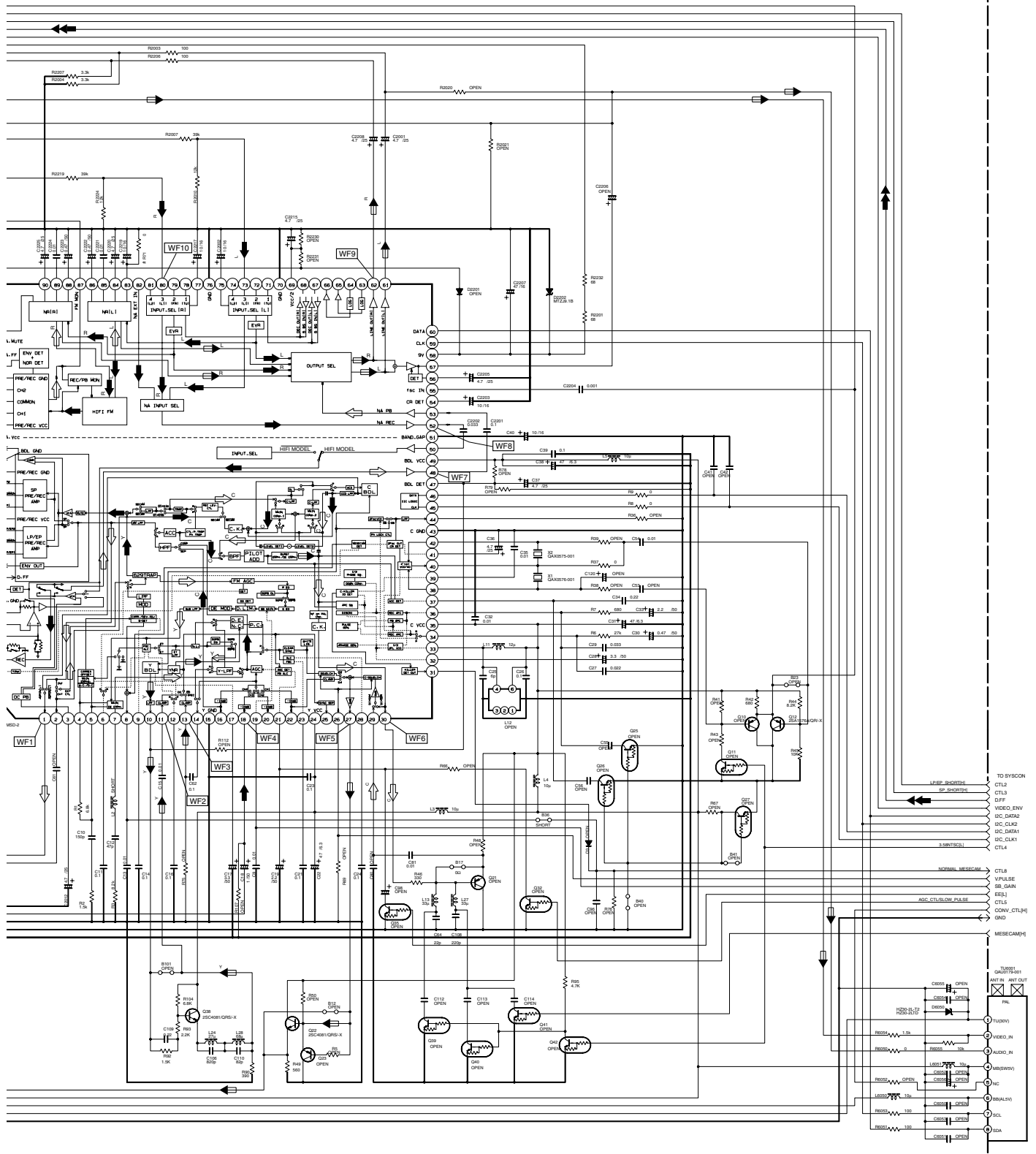
COPONENT PARTS LOCATION GUIDE

<MAIN>

REF.NO.	LOCATION	REF.NO.	LOCATION	REF.NO.	LOCATION	REF.NO.	LOCATION	REF.NO.	LOCATION	REF.NO.	LOCATION	REF.NO.	LOCATION	REF.NO.	LOCATION
CAPACITOR															
C1	B	C	15N	C2219	A	D	15L	C5301	A	D	2E	TRANSISTOR			
C2	B	C	15N	C2220	A	D	16L	C5302	A	D	4F	R911	B	C	21P
C3	B	C	14N	C2221	A	D	16L	C5303	A	D	4F	R2003	B	C	14K
C4	B	C	14N	C2222	A	D	16L	C5304	A	D	3E	R2004	B	C	14K
C5	B	C	14N	C2223	A	D	16M	C5305	A	D	4G	R2007	B	C	15K
C6	B	C	15N	C2224	A	D	16M	C5306	A	D	3H	R2010	B	C	15K
C7	B	C	15N	C2225	A	D	16M	C5307	A	D	2F	R2011	B	C	16M
C8	B	C	17N	C2226	A	D	15M	C5308	A	D	1F	R2012	B	C	17M
C9	B	C	9M	C2227	A	D	15M	C6050	B	C	19P	R2013	B	C	13O
C10	B	C	12N	C2251	A	D	15M	C6051	B	C	19O	R2014	B	C	13O
C11	B	C	12N	C2252	B	C	15M	C6052	B	C	15P	R2015	B	C	13O
C12	B	C	10N	C2253	B	C	16N	C6053	B	C	19O	R2016	B	C	12O
C13	B	C	10N	C2254	B	C	15N	C6054	A	D	16P	R2017	B	C	11O
C14	B	C	11M	C2301	B	C	16L	C6055	A	D	16P	R2018	B	C	10O
C15	B	C	12M	C2302	B	C	21D	C6056	A	D	15P	R2019	B	C	10O
C16	B	C	12M	C2303	A	D	21D	C7011	A	D	7B	R2020	B	C	14J
C17	B	C	9M	C2304	A	D	21E	C7012	B	C	8B	R2021	B	C	13J
C18	A	A	8M	C2305	A	D	21E	CONNECTOR				R2052	B	C	9P
C19	A	A	9M	C2306	A	D	22D	CN1	A	D	14O	R2053	B	C	9P
C20	A	A	9M	C2308	B	C	21D	CN2001	A	D	9O	R2054	B	C	9P
C21	B	C	9M	C2401	A	D	20F	CN2002	A	D	19L	R2055	B	C	9O
C22	B	C	12M	C2402	A	D	21F	CN3001	A	D	7L	R2056	B	C	8O
C23	B	C	12M	C2403	A	D	21F	CN3002	A	D	7Q	R2057	B	C	7O
C24	B	C	12M	C2404	A	D	21F	CN3003	A	D	7P	R2058	B	C	7O
C25	B	C	12L	C2405	B	C	21G	CN3004	A	D	9F	R2059	B	C	7O
C26	B	C	11L	C2406	A	D	20F	CN5001	A	D	1O	R2060	B	C	7O
C27	B	C	11L	C2407	A	D	20F	CN7001	A	D	4C	R2101	B	C	14O
C28	B	C	11M	C2408	B	C	19F	CN7011	A	D	12A	R2201	B	C	17L
C29	B	C	11K	C2409	B	C	19F	D1	A	D	15P	R2206	B	C	14K
C30	A	A	11L	C2410	B	C	19F	D2	A	D	15P	R2207	B	C	14K
C31	A	A	10L	C2411	A	D	19G	D3	A	D	7F	R2219	B	C	15L
C32	A	A	11L	C2412	A	D	20G	D4	A	D	9M	R2224	B	C	15L
C33	A	A	10L	C2413	A	D	19G	D5	A	D	8M	R2230	B	C	15K
C34	A	A	11K	C2414	A	D	20G	D6	A	D	9M	R2231	B	C	15K
C35	B	C	11K	C2415	A	D	19G	D7	A	D	8M	R2232	B	C	17L
C36	A	A	11K	C2416	B	C	19G	D8	A	D	8M	R2251	B	C	17L
C37	A	A	12K	C2417	B	C	19G	D9	A	D	8M	R2301	B	C	21D
C38	A	A	12K	C2418	B	C	19F	D10	A	D	17M	R2302	B	C	21D
C39	A	A	12K	C2419	B	C	20F	D11	A	D	16K	R2303	B	C	20D
C40	A	A	12K	C2420	B	C	20F	D12	A	D	16K	R2304	B	C	21D
C41	B	C	11J	C2421	A	D	22G	D13	A	D	19D	R2305	B	C	20F
C42	B	C	11J	C2422	A	D	19G	D14	A	D	12H	R2306	B	C	20D
C43	B	C	10K	C2423	A	D	20E	D15	A	D	5E	R2307	B	C	21D
C44	B	C	10K	C2424	A	D	21I	D16	A	D	9C	R2308	B	C	21E
C45	B	C	10K	C2425	A	D	22H	D17	A	D	10C	R2309	B	C	22E
C46	B	C	10K	C2426	A	D	21I	D18	A	D	14E	R2311	B	C	21E
C47	B	C	10K	C2427	A	D	18G	D19	A	D	7N	R2312	B	C	21E
C48	B	C	10N	C2428	A	D	17H	D20	A	D	14E	R2401	B	C	21F
C49	B	C	9N	C2429	B	C	17G	D21	A	D	14G	R2402	B	C	21F
C50	A	A	9N	C2430	B	C	18H	D22	A	D	1M	R2403	B	C	20G
C51	B	C	11O	C3001	B	C	7N	D23	A	D	2K	R2404	B	C	20F
C52	B	C	11N	C3002	B	C	6N	D24	A	D	3K	R2405	B	C	20F
C53	B	C	10M	C3003	B	C	6M	D25	A	D	3K	R2406	B	C	19F
C54	B	C	10M	C3004	B	C	4I	D26	A	D	3K	R2407	B	C	19F
C55	B	C	13N	C3005	B	C	20I	D27	A	D	3I	R2408	B	C	19F
C56	B	C	13N	C3006	B	C	13E	D28	A	D	2I	R2409	B	C	19G
C57	B	C	11M	C3007	B	C	13E	D29	A	D	2I	R2410	B	C	19G
C58	B	C	10M	C3008	B	C	13E	D30	A	D	2I	R2411	B	C	19G
C59	B	C	10M	C3009	B	C	13E	D31	A	D	2I	R2412	B	C	19G
C60	A	A	9N	C3010	B	C	12F	D32	A	D	2H	R2413	B	C	19G
C61	B	C	11O	C3011	B	C	12F	D33	A	D	2H	R2414	B	C	19H
C62	B	C	11N	C3012	B	C	13E	D34	A	D	4E	R2415	B	C	21F
C63	B	C	10M	C3013	B	C	16C	D35	A	D	1F	R2416	B	C	21F
C64	B	C	13N	C3014	B	C	13E	D36	A	D	15P	R2417	B	C	21H
C65	B	C	13N	C3015	B	C	13E	D37	A	D	5C	R2418	B	C	21H
C66	B	C	15N	C3016	B	C	12F	D38	A	D	3C	R2419	B	C	21H
C67	B	C	15N	C3017	B	C	12F	D39	A	D	8B	R2420	B	C	21H
C68	B	C	14N	C3018	B	C	13E	D40	A	D	8B	R2421	B	C	21H
C69	B	C	14N	C3019	B	C	16C	D41	A	D	8B	R2422	B	C	21H
C70	B	C	11N	C3020	B	C	16C	D42	A	D	8B	R2423	B	C	21H
C71	B	C	10M	C3021	B	C	16G	D43	A	D	8B	R2424	B	C	21G
C72	B	C	10M	C3022	B	C	16G	D44	A	D	8B	R2425	B	C	21G
C73	B	C	12N	C3023	B	C	12F	D45	A	D	8B	R2426	B	C	18G
C74	B	C	10L	C3024	A	D	13G	D46	A	D	8B	R2427	B	C	18G
C75	B	C	10L	C3025	A	D	9G	D47	A	D	8B	R2428	B	C	22H
C76	B	C	10L	C3026	A	D	10G	D48	A	D	8B	R2429	B	C	22H
C77	B	C	10L	C3027	A	D	10G	D49	A	D	8B	R2430	B	C	22H
C78	B	C	12L	C3028	A	D	13E	D50	A	D	11E	R2431	B	C	21H
C79	A	A	11G	C3029	B	C	11E	D51	A	D	11E	R2432	B	C	22H
C80	B	C	11G	C3030	B	C	11E	D52	A	D	7N	R2433	B	C	22G
C81	B	C	10G	C3031	B	C	14E	D53	A	D	14E	R2434	B	C	21G
C82	B	C	10G	C3032	B	C	14E	D54	A	D	16C	R2435	B	C	21G
C83	B	C	11G	C3033	B	C	16G	D55	A	D	4G	R2436	B	C	19E
C84	B	C	12G	C3034	B	C	16G	D56	A	D	4G	R2437	B	C	19E
C85	B	C	12N	C3035	B	C	12F	D57	A	D	8A	R2438	A	A	22F
C86	B	C	12N	C3036	A	D	13G	D58	A	D	8A	R2439	B	C	18F
C87	B	C	10L	C3037	A	D	9G	D59	A	D	8A	R2440	B	C	19E
C88	B	C	10L	C3038	A	D	10G	D60	A	D	5C	R2441	B	C	21H
C89	B	C	14N	C3039	B	C	9C	D61	A	D	19A	R2442	B	C	22H
C90	B	C	14N	C3040	B	C	9C	D62	A	D	21A	R2443	B	C	18G
C91	B	C	9E	C3041	B	C	16H	D63	A	D	8F	R2444	B	C	18G
C92	B	C	11N	C3042	B	C	17F	D64	A	D	8F	R2445	B	C	18G
C93	B	C	11N	C3043	B	C	17F	D65	A	D	8F	R2446	B	C	18G
C94	B	C	10G	C3044	B	C	14E	D66	A	D	8F	R2447	B	C	18G
C95	B	C	10G	C3045	B	C	14E	D67	A	D	8F	R2448	B	C	18G
C96	B	C	10G	C3046	B	C	14E								



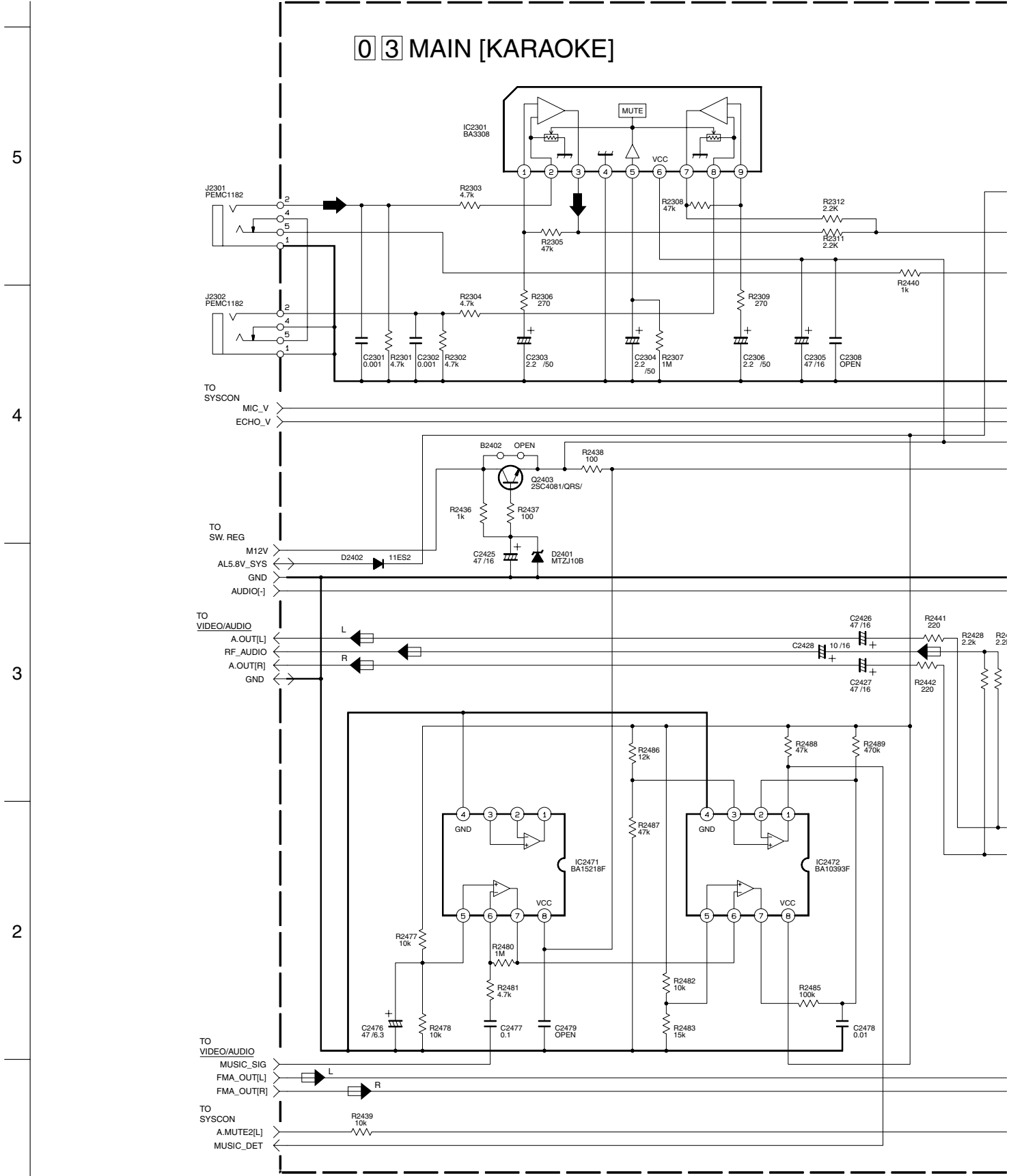
Note : The Parts Number, value and rated voltage etc. in the Schematic Diagram are for references only. When replacing the parts, refer to the Parts List.



p10298001a_rev1

NOTES-UNLESS OTHERWISE SPECIFIED.
 ALL RESISTANCE VALUES ARE IN OHMS.
 ALL INDUCTANCE VALUES ARE IN H.
 ALL CAPACITANCE VALUES ARE IN μ F.
 + - ELECTROLYTIC
 - - CERAMIC
 - - MYLER
 - - NON POLAR

4.3 KARAOKE SCHEMATIC DIAGRAM



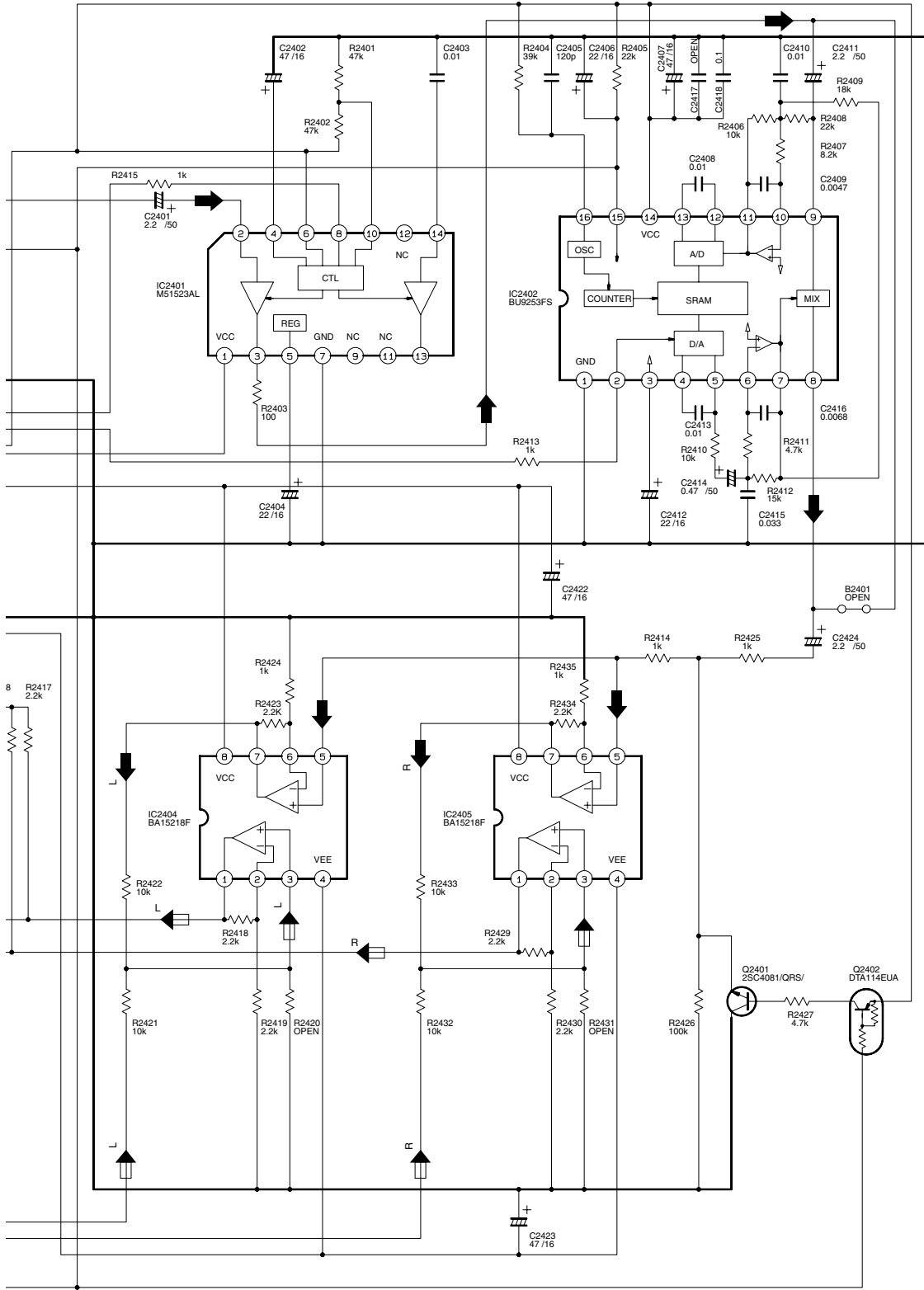
NOTES: UNLESS OTHERWISE SPECIFIED.
 ALL RESISTANCE VALUES ARE IN OHMS.
 ALL INDUCTANCE VALUES ARE IN H.
 ALL CAPACITANCE VALUES ARE IN μ F.

- ELECTROLYTIC
- CERAMIC
- MYLER
- NON POLAR

5
4
3
2
1

4-6 A B C D

Note : The Parts Number, value and rated voltage etc. in the Schematic Diagram are for references only.
When replacing the parts, refer to the Parts List.



p20179001a_rev1

Notes:

- How to find the page showing the continuative schematic diagram.
Example) TO SYSCON: Refer to the reference model's service manual.
TO SYSCON: Refer to this service manual.
- For the waveforms in this schematic diagram, refer to page 4-8.

4.4 WAVEFORMS

< VIDEO/AUDIO >

